



Customizing your settings in Pro/Engineer

Overview

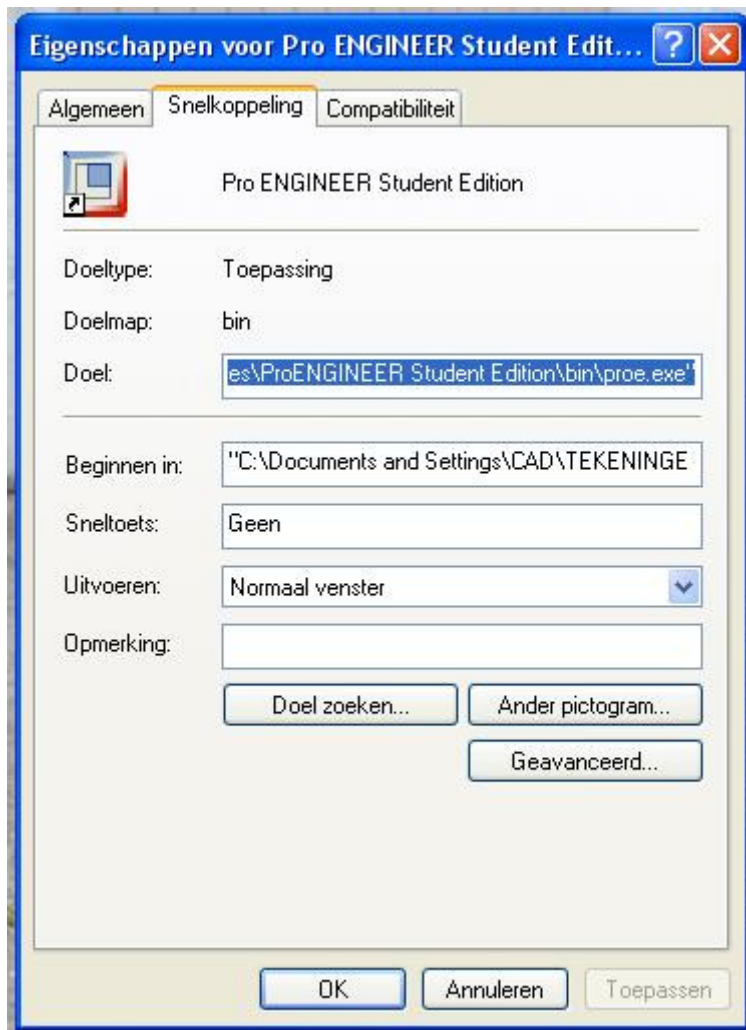
The major customization tool in Pro/Engineer is the config.pro – file. This document explains how to use and modify the config.pro- file.

A second file, a *.dtl file organizes the settings for the drawings.

Configuration Files

Config.pro - file

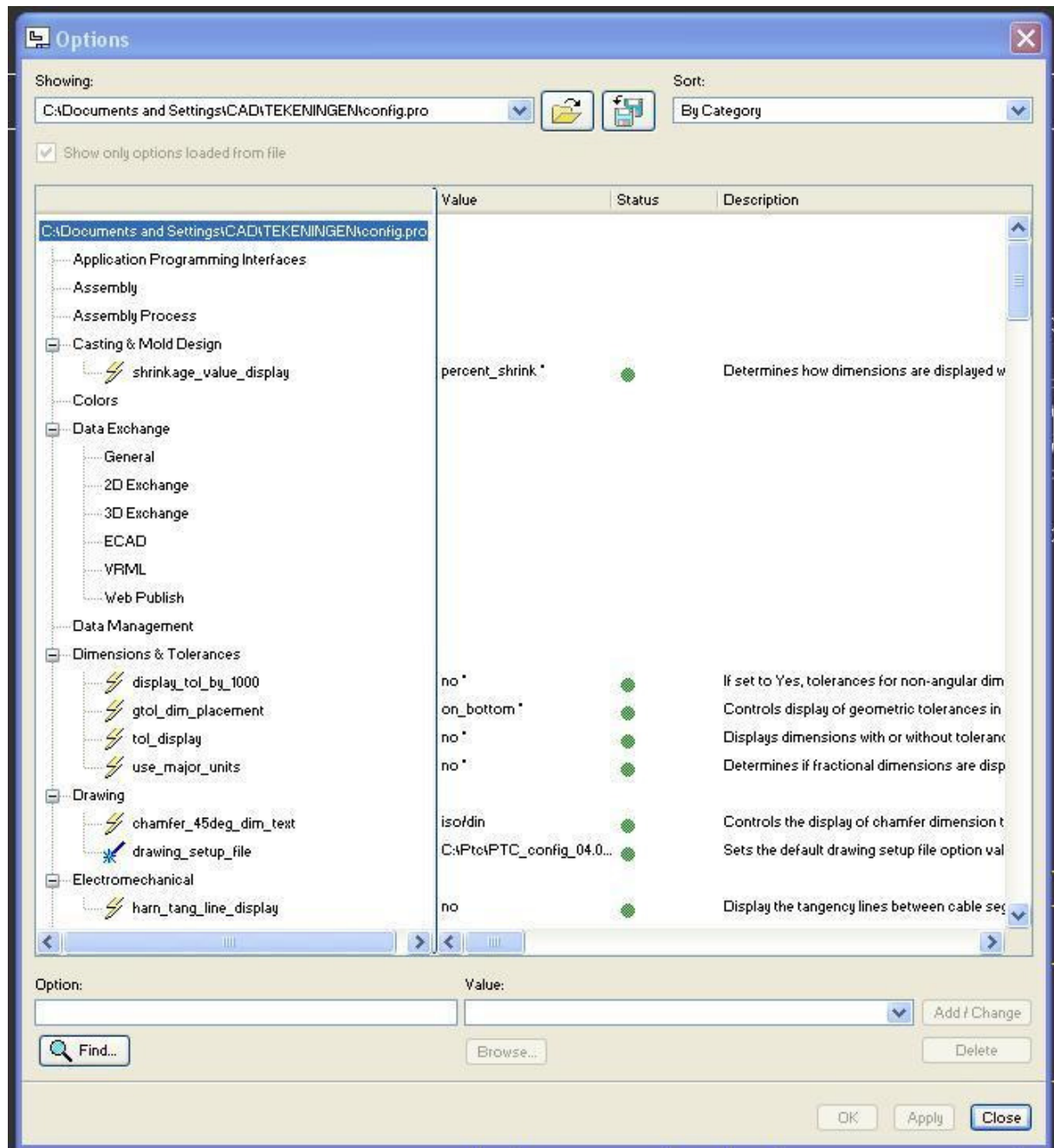
When starting up, Pro/Engineer will automatically search for the config.pro file in the startup-directory, set in the start-up Short-cut, as shown below.



Let the shortcut point to the file where you save your drawings and copy the config.pro –file to this location.

For modifying the config.pro – file go to TOOLS > OPTIONS:

Technical Documentation Archives



⚡ (lightning) - option takes effect immediately

✒ (wand) - option will take effect for the next object created

🖥 (screen) - option will take effect the next time Pro/E is started



Technical Documentation Archives

***.dtl – file**

A *.dtl – file like for example iso.dtl, or jis.dtl will define de settings for the drawing environment. You can find these .dtl – files in the ‘text’ folder:

Program files > Pro Engineer > text

For Metric drawing-settings copy the iso.dtl – file to your startup-directory and change or add the drawing_setup_file-option in the config.pro – file and set it to the path of your startup-directory.